

FULL PRESCRIBING INFORMATION

1 INDICATIONS AND USAGE

RHOPRESSA is indicated for the reduction of elevated intraocular pressure (IOP) in patients with open-angle glaucoma or ocular hypertension.

2 DOSAGE AND ADMINISTRATION

The recommended dosage is one drop in the affected eye(s) once daily in the evening.

If one dose is missed, treatment should continue with the next dose in the evening. Twice a day dosing is not well tolerated and is not recommended. If RHOPRESSA is to be used concomitantly with other topical ophthalmic drug products to lower IOP, administer each drug product at least 5 minutes apart [*see Patient Counseling Information (17)*].

3 DOSAGE FORMS AND STRENGTHS

Ophthalmic solution containing netarsudil 0.02% (0.2 mg/mL).

4 CONTRAINDICATIONS

None.

5 WARNINGS AND PRECAUTIONS

5.1 Epithelial Corneal Edema

Epithelial corneal edema, described as honeycomb or bullous, has been reported in some patients with pre-existing corneal stromal edema or following ocular procedures that could affect corneal endothelial function. Epithelial corneal edema typically resolves upon discontinuation of RHOPRESSA. Advise patients to notify their physician if they experience eye pain or decreased vision while using RHOPRESSA. [*see Adverse Reactions (6.2) and Patient Counseling Information (17)*].

5.2 Bacterial Keratitis

There have been reports of bacterial keratitis associated with the use of multiple-dose containers of topical ophthalmic products. These containers had been inadvertently contaminated by patients who, in most cases, had a concurrent corneal disease or a disruption of the ocular epithelial surface [*see Patient Counseling Information (17)*].

5.3 Use with Contact Lenses

Contact lenses should be removed prior to instillation of RHOPRESSA and may be reinserted 15 minutes following its administration.

6 ADVERSE REACTIONS

6.1 Clinical Trials Experience

Because clinical studies are conducted under widely varying conditions, adverse reaction rates observed in the clinical studies of a drug cannot be directly compared to rates in the clinical studies of another drug and may not reflect the rates observed in practice.

The most common ocular adverse reaction observed in controlled clinical studies with RHOPRESSA dosed once daily was conjunctival hyperemia which was reported in 53% of patients. Six percent of patients discontinued therapy due to conjunctival hyperemia. Other common (approximately 20%) ocular adverse reactions reported were: corneal verticillata, instillation site pain, and conjunctival hemorrhage. Instillation site

erythema, corneal staining, blurred vision, increased lacrimation, erythema of eyelid, and reduced visual acuity were reported in 5-10% of patients.

Corneal Verticillata

Corneal verticillata occurred in approximately 20% of the patients in controlled clinical studies. The corneal verticillata seen in RHOPRESSA-treated patients were first noted at 4 weeks of daily dosing. This reaction did not result in any apparent visual functional changes in patients. Most corneal verticillata resolved upon discontinuation of treatment.

6.2 Postmarketing Experience

The following adverse reactions have been identified during postmarketing use of RHOPRESSA. Because these reactions are reported voluntarily from a population of uncertain size, it is not always possible to reliably estimate their frequency or establish a causal relationship to drug exposure.

Eye disorders: Epithelial corneal edema has been reported in some patients with pre-existing corneal stromal edema or following ocular procedures that could affect corneal endothelial function [*see Warnings and Precautions (5.1)*].

8 USE IN SPECIFIC POPULATIONS

8.1 Pregnancy

Risk Summary

There are no available data on RHOPRESSA use in pregnant women to inform any drug associated risk; however, systemic exposure to netarsudil from ocular administration is low [*see Clinical Pharmacology (12.3)*]. Intravenous administration of netarsudil to pregnant rats and rabbits during organogenesis did not produce adverse embryofetal effects at clinically relevant systemic exposures (*see Data*).

Data

Animal Data

Netarsudil administered daily by intravenous injection to rats during organogenesis caused abortions and embryofetal lethality at doses ≥ 0.3 mg/kg/day (126-fold the plasma exposure at the recommended human ophthalmic dose [RHOD], based on C_{max}). The no-observed-adverse-effect-level (NOAEL) for embryofetal development toxicity was 0.1 mg/kg/day (40-fold the plasma exposure at the RHOD, based on C_{max}).

Netarsudil administered daily by intravenous injection to rabbits during organogenesis caused embryofetal lethality and decreased fetal weight at 5 mg/kg/day (1480-fold the plasma exposure at the RHOD, based on C_{max}). Malformations were observed at ≥ 3 mg/kg/day (1330-fold the plasma exposure at the RHOD, based on C_{max}), including thoracogastroschisis, umbilical hernia and absent intermediate lung lobe. The NOAEL for embryofetal development toxicity was 0.5 mg/kg/day (214-fold the plasma exposure at the RHOD, based on C_{max}).

8.2 Lactation

Risk Summary

There are no data on the presence of RHOPRESSA in human milk, the effects on the breastfed infant, or the effects on milk production. However, systemic exposure to netarsudil following topical ocular administration is low [*see Clinical Pharmacology (12.3)*], and it is not known whether measurable levels of netarsudil would be present in maternal milk following topical ocular administration.

The developmental and health benefits of breastfeeding should be considered along with the mother's clinical need for RHOPRESSA and any potential adverse effects on the breast-fed child from RHOPRESSA.

8.4 Pediatric Use

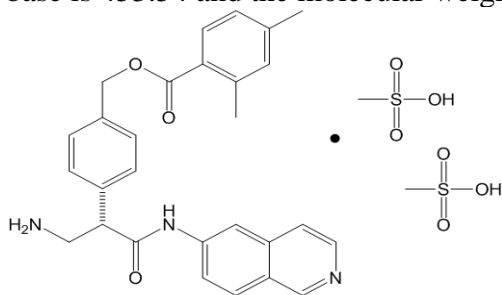
Safety and effectiveness in pediatric patients below the age of 18 years have not been established.

8.5 Geriatric Use

No overall differences in safety or effectiveness have been observed between elderly and other adult patients.

11 DESCRIPTION

Netarsudil is a Rho kinase inhibitor. Its chemical name is (S)-4-(3-amino-1-(isoquinolin-6-yl-amino)-1-oxopropan-2-yl) benzyl 2,4-dimethylbenzoate dimesylate. The molecular formula of the free base is $C_{28}H_{27}N_3O_3$ and the molecular formula of the dimesylate is $C_{30}H_{35}N_3O_9S_2$. The molecular weight of the free base is 453.54 and the molecular weight of the dimesylate is 645.74. The chemical structure is:



Netarsudil dimesylate is a light yellow-to-white powder that is freely soluble in water, soluble in methanol, sparingly soluble in dimethyl formamide, and practically insoluble in dichloromethane and heptane.

RHOPRESSA (netarsudil ophthalmic solution) 0.02% is supplied as a sterile, isotonic, buffered aqueous solution of netarsudil dimesylate with a pH of approximately 5 and an osmolality of approximately 295 mOsmol/kg. It is intended for topical application in the eye. Each mL of RHOPRESSA contains 0.2 mg of netarsudil (equivalent to 0.28 mg of netarsudil dimesylate). Benzalkonium chloride, 0.015%, is added as a preservative. The inactive ingredients are: boric acid, mannitol, sodium hydroxide to adjust pH, and water for injection.

12 CLINICAL PHARMACOLOGY

12.1 Mechanism of Action

Netarsudil is a rho kinase inhibitor, which is believed to reduce IOP by increasing the outflow of aqueous humor through the trabecular meshwork. The exact mechanism is unknown.

12.3 Pharmacokinetics

Absorption

The systemic exposures of netarsudil and its active metabolite, AR-13503, were evaluated in 18 healthy subjects after topical ocular administration of RHOPRESSA 0.02% once daily (one drop bilaterally in the morning) for 8 days. There were no quantifiable plasma concentrations of netarsudil (lower limit of quantitation (LLOQ) 0.100 ng/mL) post dose on Day 1 and Day 8. Only one plasma concentration at 0.11 ng/mL for the active metabolite was observed for one subject on Day 8 at 8 hours post-dose.

Metabolism

After topical ocular dosing, netarsudil is metabolized by esterases in the eye.

13 NONCLINICAL TOXICOLOGY

13.1 Carcinogenesis, Mutagenesis, Impairment of Fertility

Long-term studies in animals have not been performed to evaluate the carcinogenic potential of netarsudil. Netarsudil was not mutagenic in the Ames test, in the mouse lymphoma test, or in the *in vivo* rat micronucleus test. Studies to evaluate the effects of netarsudil on male or female fertility in animals have not been performed.

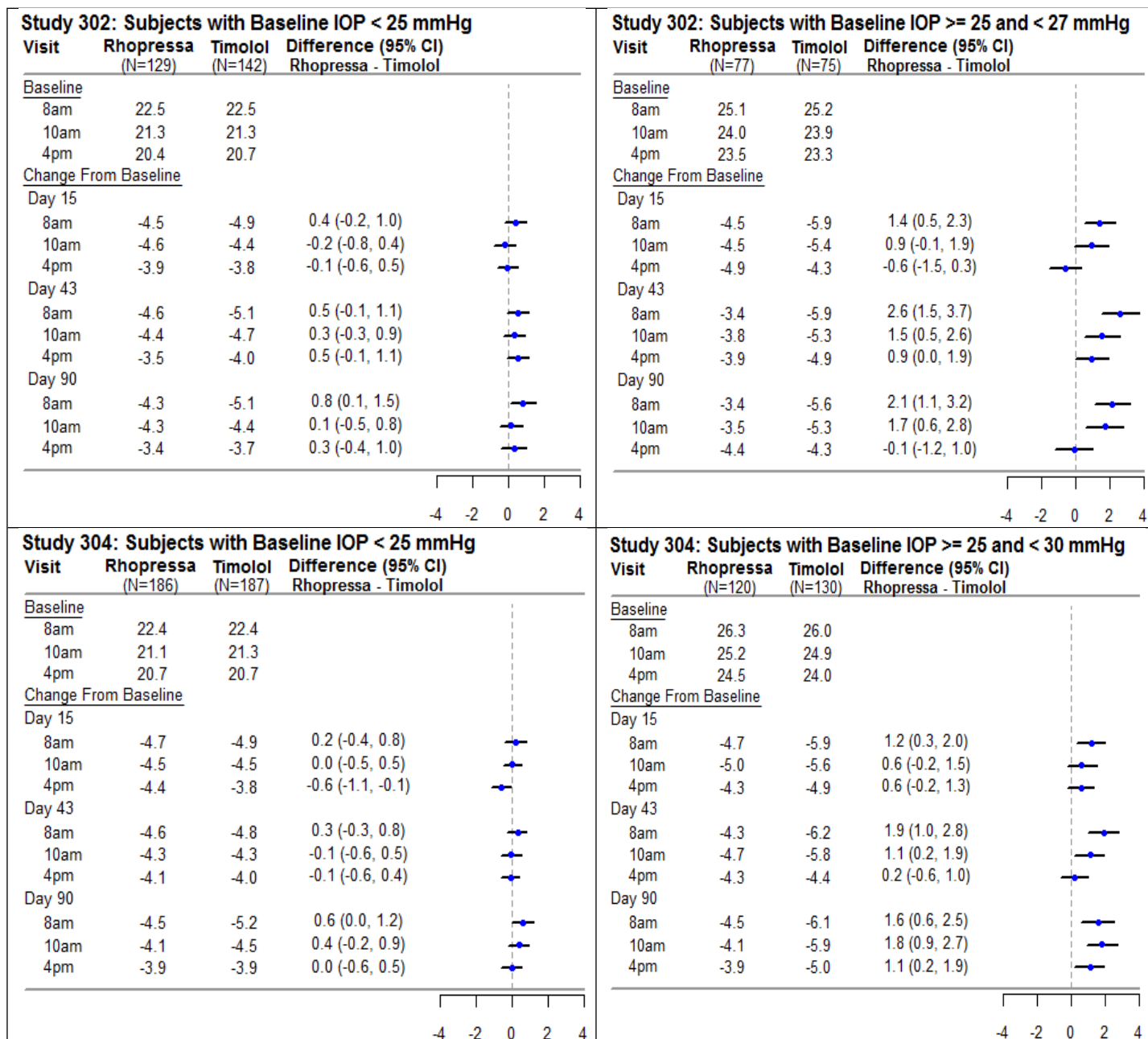
14 CLINICAL STUDIES

RHOPRESSA 0.02% was evaluated in three randomized and controlled clinical trials, namely AR-13324-CS301 (NCT 02207491, referred to as Study 301), AR-13324-CS302 (NCT 02207621, referred to as Study 302), and AR-13324-CS304 (NCT 02558374, referred to as Study 304), in patients with open-angle glaucoma or ocular hypertension. Studies 301 and 302 enrolled subjects with baseline IOP lower than 27 mmHg and Study 304 enrolled subjects with baseline IOP lower than 30 mmHg. The treatment duration was 3 months in Study 301, 12 months in Study 302, and 6 months in Study 304.

The three studies demonstrated up to 5 mmHg reductions in IOP for subjects treated with RHOPRESSA 0.02% once daily in the evening. For patients with baseline IOP < 25 mmHg, the IOP reductions with RHOPRESSA 0.02% dosed once daily were similar to those with timolol 0.5% dosed twice daily (see Table 1). For patients with baseline IOP equal to or above 25 mmHg, however, RHOPRESSA 0.02% resulted in smaller mean IOP reductions at the morning time points than timolol 0.5% for study visits on Days 43 and 90; the difference in mean IOP reduction between the two treatment groups was as high as 3 mmHg, favoring timolol.

Table 1: Mean IOP Change from Baseline of Study Eye (mmHg) by Visit and Time

Study 301: Subjects with Baseline IOP < 25 mmHg				Study 301: Subjects with Baseline IOP ≥ 25 and < 27 mmHg			
Visit	Rhopressa (N=113)	Timolol (N=124)	Difference (95% CI) Rhopressa - Timolol	Visit	Rhopressa (N=69)	Timolol (N=64)	Difference (95% CI) Rhopressa - Timolol
Baseline				Baseline			
8am	22.4	22.5		8am	25.1	25.1	
10am	21.3	21.1		10am	23.9	23.6	
4pm	20.6	20.5		4pm	23.7	23.3	
Change From Baseline				Change From Baseline			
Day 15				Day 15			
8am	-5.1	-4.7	-0.3 (-0.9, 0.3)	8am	-4.3	-5.7	1.3 (0.4, 2.3)
10am	-5.0	-4.2	-0.9 (-1.5, -0.3)	10am	-4.9	-5.0	0.1 (-0.9, 1.2)
4pm	-4.4	-3.4	-0.9 (-1.6, -0.3)	4pm	-4.7	-4.6	-0.1 (-1.2, 0.9)
Day 43				Day 43			
8am	-4.5	-4.7	0.2 (-0.5, 0.9)	8am	-3.3	-6.0	2.7 (1.5, 3.8)
10am	-4.3	-4.2	-0.2 (-0.8, 0.5)	10am	-3.7	-5.3	1.6 (0.4, 2.7)
4pm	-4.0	-3.3	-0.7 (-1.4, 0.0)	4pm	-3.7	-4.8	1.2 (0.0, 2.3)
Day 90				Day 90			
8am	-4.2	-4.6	0.4 (-0.2, 1.1)	8am	-2.6	-5.5	3.0 (1.8, 4.1)
10am	-3.9	-3.7	-0.2 (-0.9, 0.5)	10am	-2.2	-4.7	2.5 (1.4, 3.6)
4pm	-3.6	-3.2	-0.4 (-1.0, 0.3)	4pm	-2.6	-4.9	2.3 (1.2, 3.5)



This table was produced based on the observed data from all randomized subjects who did not have major protocol violations. The treatment differences and two-sided CIs for comparing Rhopressa QD vs Timolol BID 0.5% were based on Analysis of Covariance (ANCOVA) adjusted for baseline IOP.

16 HOW SUPPLIED/STORAGE AND HANDLING

RHOPRESSA® (netarsudil ophthalmic solution) 0.02% is supplied sterile in opaque white low density polyethylene bottles and tips with white polypropylene caps.

2.5 mL fill in a 4 mL container
NDC # 70727-497-25

Storage: Store at 2°C to 8°C (36°F to 46°F) until opened. After opening, the product may be kept at 2°C to 25°C (36°F to 77°F) for up to 6 weeks. If after opening the product is kept refrigerated at 2°C to 8°C (36°F to 46°F), then the product can be used until the expiration date stamped on the bottle. During shipment, the bottle may be maintained at temperatures up to 40°C (104°F) for a period not exceeding 14 days.

17 PATIENT COUNSELING INFORMATION

Handling the Container

Instruct patients to avoid allowing the tip of the dispensing container to contact the eye, surrounding structures, fingers, or any other surface in order to minimize contamination of the solution. Serious damage to the eye and subsequent loss of vision may result from using contaminated solutions [*see Warnings and Precautions (5.2)*].

When to Seek Physician Advice

Advise patients that if they develop an intercurrent ocular condition (e.g., trauma, infection, or decreased vision with or without eye pain), have ocular surgery, or develop any ocular reactions, particularly conjunctivitis and eyelid reactions, they should immediately seek their physician's advice concerning the continued use of RHOPRESSA.

Use with Contact Lenses

Advise patients that RHOPRESSA contains benzalkonium chloride, which may be absorbed by soft contact lenses. Contact lenses should be removed prior to instillation of RHOPRESSA and may be reinserted 15 minutes following its administration.

Use with Other Ophthalmic Drugs

Advise patients that if more than one topical ophthalmic drug is being used, the drugs should be administered at least 5 minutes between applications.

Missed Dose

Advise patients that if one dose is missed, treatment should continue with the next dose in the evening.

© 2024 Alcon Inc.

U.S. Pat.: www.alconpatents.com

Manufactured for: ALCON LABORATORIES, INC 6201 South Freeway Fort Worth,

Texas 76134 USA

1-800-757-9195

Alcon.medinfo@alcon.com